

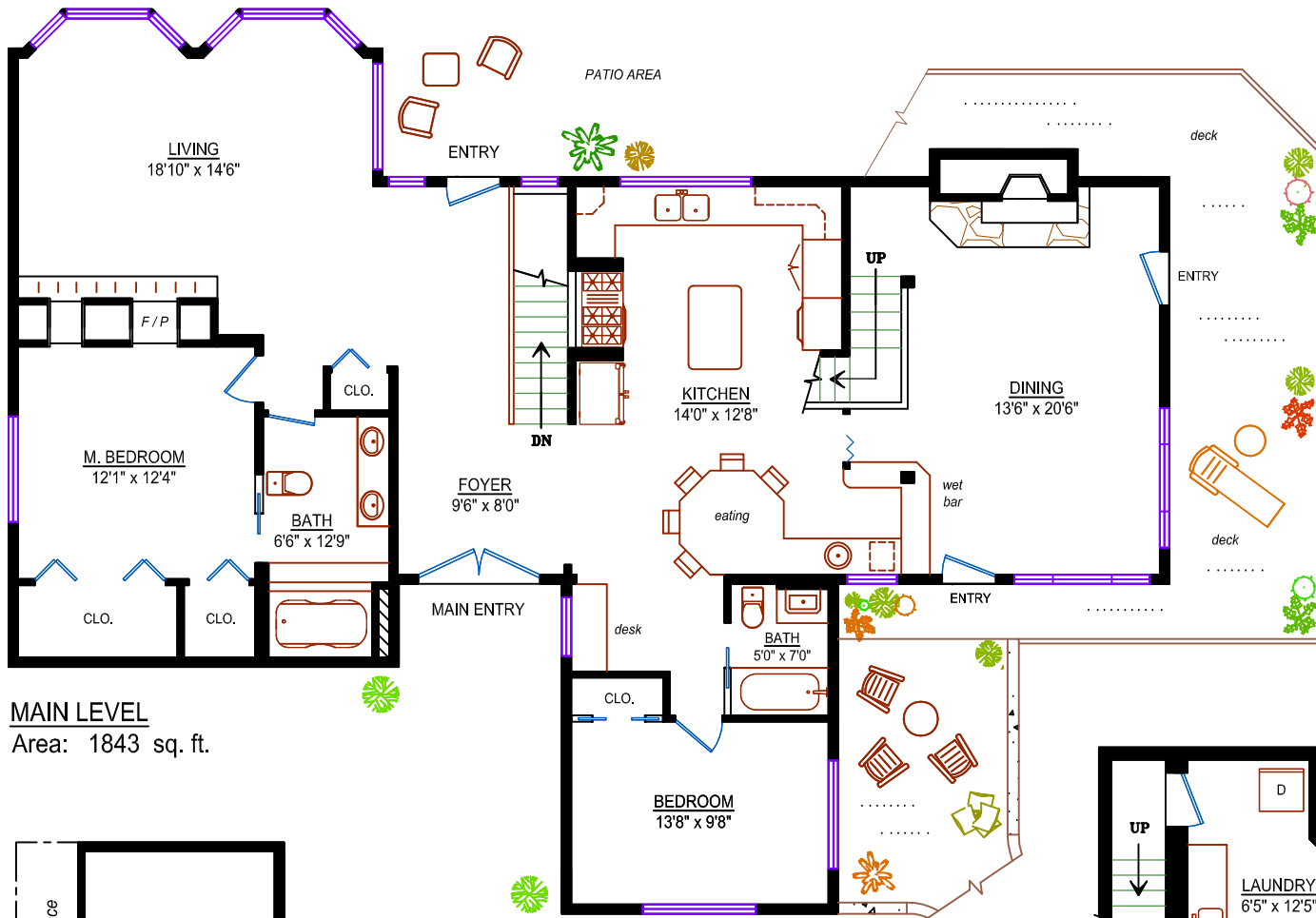
**425 Inglewood Pl.
W. Vancouver, BC**

Main Level: 1843 sq. ft.
 * Upper Level: 298 sq. ft.
 Lower Level: 711 sq. ft.
 * Total: 2852 sq. ft.

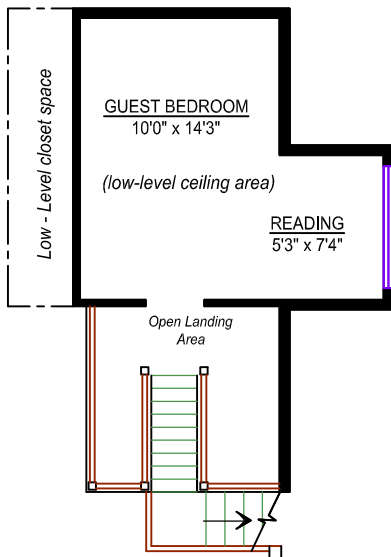
Unfinished: 37 sq. ft.
 * Grand Total: 2889 sq. ft.
 (includes low-level ceiling areas)

Other Areas: (not included in total)

Garage: 519 sq. ft.
 (detached - not shown)



MAIN LEVEL
 Area: 1843 sq. ft.



UPPER LEVEL (low-level areas)
 Area: 298 sq. ft.

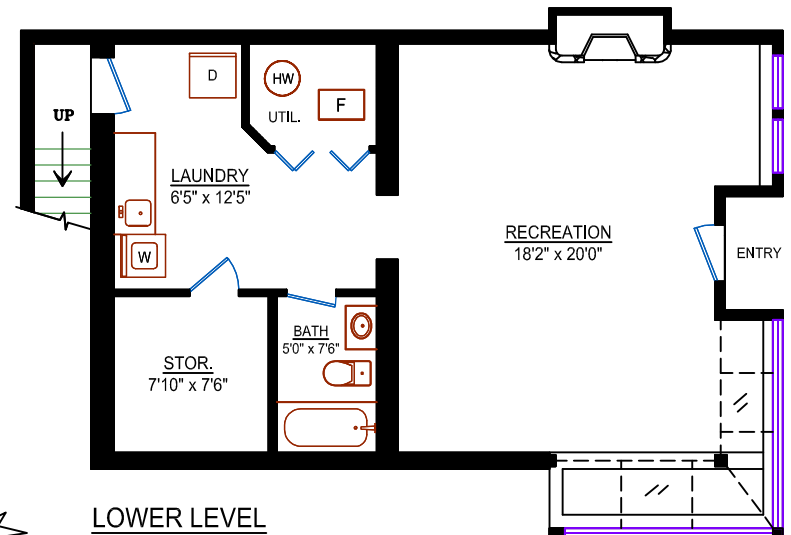
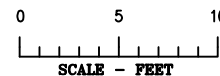
Clara Hartree

First in West Vancouver Real Estate



604.889.9977

clara@clarahartree.com
 www.clarahartree.com



LOWER LEVEL
 Area: 711 sq. ft. (Fin.)
 Area: 37 sq. ft. (Unfin.)

Design Ideas 4u

604-862-5914
 * room dimensions are approximate*
 * sq. ft. measurements are not guaranteed *